

SHARP Module to Bale Tracking System for Cotton

Product Profile

“Scale-based Cotton Gin Processing & Tracking”

Track Modules and Bales with Speed and Accuracy

Supports Existing Scales

Module Receiving Interface

Bale Scale Interface

Seed Scale Interface

Supports existing Module and Bale Barcode Tag formats

Supports Handheld or Fixed Mount Barcode Scanners

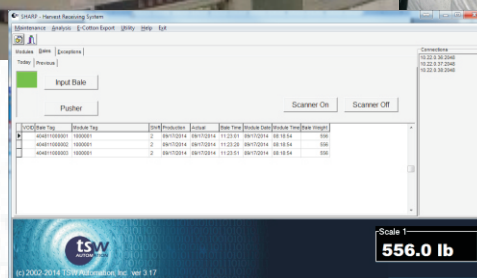
Supports RFID Module Tags

Wired or Wireless Ethernet Connectivity

Interface Scales or Printers to Remote Data Center

Networked CCD camera pictures can be stored with Bale data.

Automatic E-Mail Receipt Notifications



SHARP cotton bale tracking system

The **SHARP** System provides the most streamlined method available to get accurate Bale weights into existing management systems such as **E-Cotton**.

The system provides enhanced truck scale support. **SHARP** allows the use of your existing Module, Seed, and Bale scales to accurately capture the weight of Cotton being processed by the Gin.

By automating the data capture portion of the receiving process, data management is faster, more accurate, and more reliable.

Data input is streamlined using Barcode, and or **RFID** technologies. **SHARP** supports the use of Scale Indicators from most major scale manufacturers.

SHARP has a comprehensive set of reporting features.

SHARP also provides data export features to accounting packages that support ODBC. The system also interfaces seamlessly with E-Cotton, as well as other PC and Mainframe computer applications that have ODBC data file compatibility.

Delivery notifications can be e-mailed to growers, or can be made to be “securely” viewable via the internet.

The system operates in a networked environment over LAN / WAN / Wireless networks for a fully integrated solution.

For a more complete features list and product specifications please visit www.tswa.com/sharp.

SHARP

SHARP Software and Hardware Specifications

Software Specifications

Supports Windows 7 & 10

Scale Support

NTEP legal for trade scale w/ continuous Serial Output

Scale User Interface

1.6"H x 3.2"W electroluminescent dot graphic display
(160 x 80) dot layout) Simultaneously displays 0.6" high readings of Bale weight, and Bale Tag Number

Scale Operating System

Event driven functionality triggered by actions such as scanning of Bale Tag, pressing a function key, or reading a Module Tag via RFID

Network Support

Windows Network ready. Transaction data can be stored anywhere on the company wide network. Weight data is retrieved from the Scales in the Gin, using industry standard Wi-Fi components.

Compatibility and Data Storage

E-Cotton, CSV, Fixed Record Length, SQL Server, DB2, Oracle, Sybase, Access, dBase, Paradox, FoxPro, Excel, and other ODBC compliant databases

Security

Five level user password system. Tracks and records all user actions in system log files

Transaction Speed

Performs weighment and data store in as little as 5 seconds. Bale Weight record is immediately available monitoring and reporting.

Barcode Specification

Code 39, Extended Code 39, Codabar, Code 128, Code 11, Code 93, EAN-13, EAN-14, UCC/EAN-128, I 2 of 5, UPC, PDF, and other standard formats

Online Help

Comprehensive online help with lookup index

Hardware Specifications

Computer Requirement

Windows 7 or 10 PC w/ Network Connectivity

Computer Location

Local Server (Distributed) or Corporate Server (Centralized)

Scale

Industry Standard scales w/ RS232 Serial or Ethernet connection

Communication

Ethernet, RF, Wi-Fi, or RS-232

Network

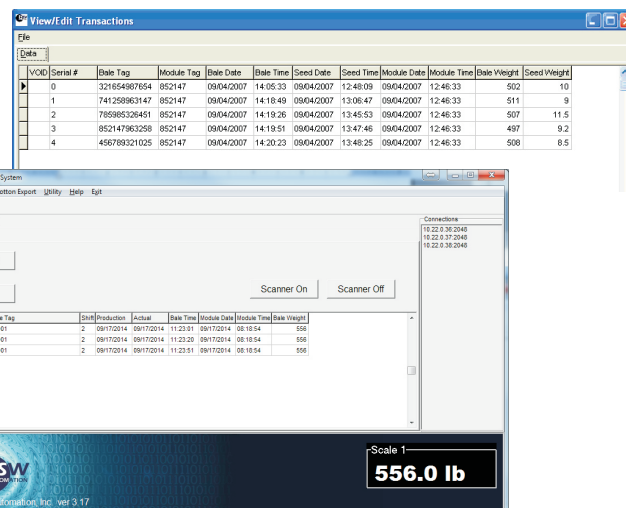
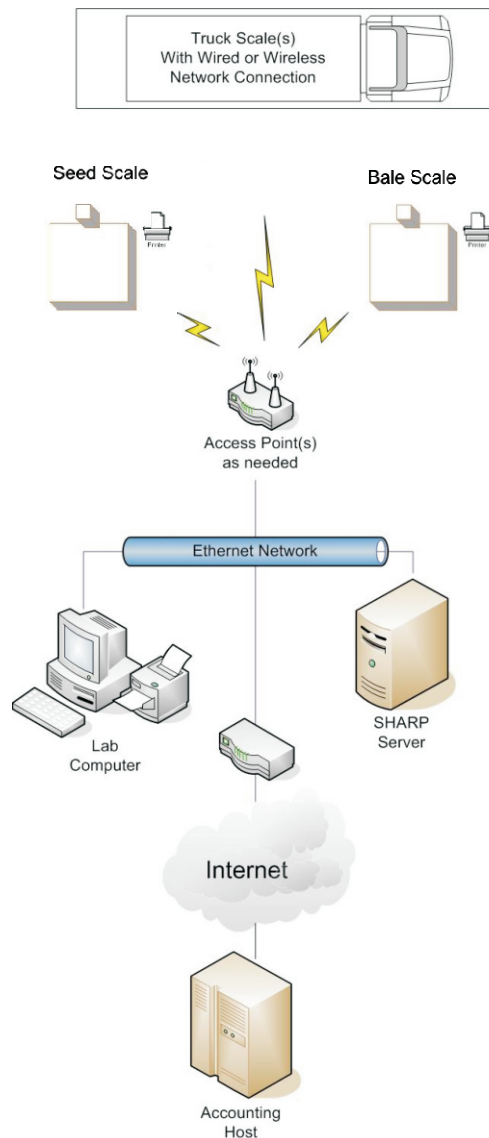
Ethernet and Industry standard Wi-Fi components

Scanner

Supports most RS-232 decoded output scanners

Support

90 days included, annual contracts available



Specifications are subject to change without notice
All rights reserved.
Copyright 2015-2020 TSW Automation, Inc.