

FABS Formulation and Batching Supervisory System

Product Profile

Fast Accurate Batching

- Prompts operator through Schedule of Formulas
- Enforces Ingredient Tolerances
- Monitor Operator Productivity

Historical Batch Traceability

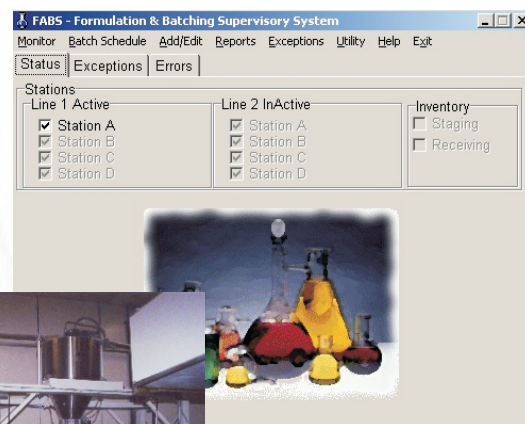
- What Ingredients and Lots Went in to the Batch?
- Who made the Batch?
- What were the target vs. actual amounts?

Track Ingredient Usage

- Receive Ingredients into Inventory
- Depletes Inventory as Ingredients are Used
- Tracks Vendor Lot Numbers
- View Batches for Specified Lots, Formulas, Operators and Dates

Designed for the Environment

- Ruggedized Equipment on the Plant Floor
- FABS PC Stays in the Office
- Off the Shelf Standard Components
- Modular, Easy to Maintain



FABS formulation and batching supervisory system

Working in conjunction with the a weight indicator or mobile PC, The **FABS** - Formulation and Batching Supervisory System controls and monitors the manual fill of ingredients into a scale mounted container.

The **FABS** System consists of two software components. The first program resides in the weight indicator or mobile PC on the factory floor and controls the manual filling of multiple ingredients, by weight, into a container on the scale. The second program resides in a remote PC and monitors the filling operation and collects data from the filling process. The PC program then provides complete record keeping and reporting for management control of the filling process.

Transactions for all active stations and lines are constantly monitored and recorded at the remote PC location. The PC operator can watch the results of each filling operation and can modify and download new formulas to each station separately, as the process requires.

At the filling station, the scale weight display prompts the operator through each stage of the filling process, displaying each formula and the associated ingredients for the formula.

The weight indicator monitors the filling of each ingredient and prevents the operator from under filling or over filling the ingredient target weight.

The indicator or mobile PC then records the results of each batch and transmits the completed batch information back to the remote **FABS** PC system.

The unique display of the weight indicator or mobile PC provides the scale operator with detailed and exact information to make the filling process accurate and efficient.

FABS

FABS Formulation and Batching Supervisory System

The FABS system is a computer-based software data management system designed to work with a scale indicator or mobile PC to control manual filling of ingredients using multiple formulas and capturing batch data for inclusion in management reports.

Top 10 Software Features

- 1 Formula and Batching Control
- 2 Easy to Use Report Wizard
- 3 Multiple Ingredient Storage
- 4 Recipe Status and Control
- 5 Batch Scheduling
- 6 Ingredient Inventory Maintenance
- 7 Operation Status Monitoring
- 8 Batch Exception Reporting
- 9 System Operator Management
- 10 Flexible Utilities

Formula and Batching Control

- Download up to 8 ready-to-use recipes from the PC to the Weight Display.
- The station prompts operator through each stage of the batching process.
- The over/under indicator shows operator exact weight position to fill to for each ingredient.
- Prevents operator from filling an ingredient out of tolerance.
- Collects the results of each ingredient fill and transmits the results to the remote PC.
- Provides for up to 4 filling stations per line.

Easy to Use Report Wizard

- Steps operator through setting up and producing the report.
- Select from several standard reports
- Allows for flexible report date ranges.

Multiple Ingredient Storage

- Number of ingredients limited only by PC disk space.
- Allows for alphanumeric ingredient description.
- Allows for minimum and maximum recipe weights allowed.

Recipe Status and Control

- Allows for up to 20 ingredients per recipe.
- Each ingredient in a recipe has discrete upper, target and lower tolerance values by recipe number.
- Each ingredient in a recipe identifies the station to which it applies.
- Each ingredient is assigned a batching sequence.
- Each ingredient identifies a tub or container number to which it applies.

Batch Scheduling

- Allows for complete flexibility in setting up batching operations.
- Flexible number of batches for each recipe selected.
- A lot # can be assigned to each recipe selected.

Ingredient Inventory Maintenance

- Inventory received can be automatically scanned, weighed and stored in the PC program.

- Ingredients can be moved from inventory to "Work in Process".
- As ingredients are used, the amounts from the filling system are automatically deducted from inventory.
- Reports can be printed showing the results of inventory transactions and remaining balances on hand.
- Manual adjustments and corrections can be made through the PC system.

Operating Status Monitoring

- Filling stations can be monitored at the PC as to the status of each station on each line in the filling process.
- The PC operator can follow the filling of each ingredient as to target weight and actual weight processed.
- The status of each downloaded recipe for each station on each line can be viewed in real time at the PC.

Batch Exception Reporting

- All batch exceptions and processing errors are reported to the PC operator.

System Operator Management

- Allows for multiple operators
- Operators at the filling stations must enter operator ID and Password to access the system.
- Operators are assigned password levels from 1 to 5 to allow for access to various operations and functions of the system.

Flexible Utilities

- The operations program is downloaded from the PC program to assure uniform operation.
- All PC files can be backed up from the main database to a back up database to preserve data.
- System status allows for communication monitoring and verification.



Specifications are subject to change without notice.
All rights reserved.
Copyright 2006-2020 TSW Automation, Inc.