

CAR-PAC Product Profile

Fast Durable Tags

Accurate Reports

Less Effort

Designed for the
Environment

Select from Several
Standard Fields

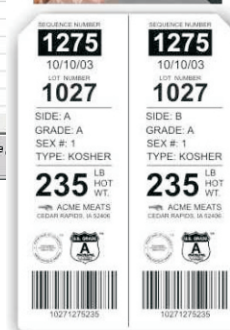
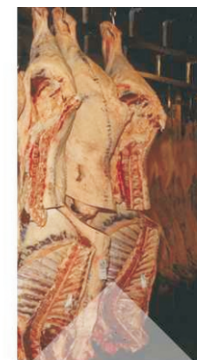
CAR-PAC - Carcass Tagging and Tracking System

Maintenance Analysis Utility Help Exit

In QM Exceptions

Date in	Date Out	Grower	Calf #	Quality	Grade	K/T	Hot Wt	Ship Wt	Comment
01/28/2004	01/28/2004	14	158	R	X	T	263	263	8313
01/28/2004	01/28/2004	14	188	R	X	T	215	215	8314
01/28/2004	01/28/2004	25	100	D	A	T	300	300	
01/28/2004	01/28/2004	25	102	D	A	T	305	305	
01/28/2004	01/28/2004	25	103	B	A	T	297	297	
01/28/2004	01/28/2004	25	104	D	A	T	273	273	
01/28/2004	01/28/2004	25	105	E	A	T	285	285	
01/28/2004	01/28/2004	25	107	D	A	T	279	279	
01/28/2004	01/28/2004	25	108	D	A	T	301	301	
01/28/2004	01/28/2004	25	110	D	A	T	289	289	
01/28/2004	01/28/2004	25	111	B	A	T	286	286	
01/28/2004	01/28/2004	25	112	D	A	T	310	310	
01/28/2004	01/28/2004	25	113	D	A	T	271	271	
01/28/2004	01/28/2004	25	3	A	T		309	309	
01/28/2004	01/28/2004	25		A	T		271	271	P

TSWA TSW Automation, Inc. Nashville, www.tswa.com



CAR-PAC carcass tagging & tracking system

The CAR-PAC system generates fast, durable carcass tags and produces immediate and accurate reports. Users can replace labor intensive and error prone handwriting of tags and manually tallying of reports. The system provides complete carcass tracking from receiving, hot scale, cold scale, to shipping.

CAR-PAC produces accurate tags at the press of a button. Flexible fields show items you choose to track downstream, either visually or with optional barcodes.

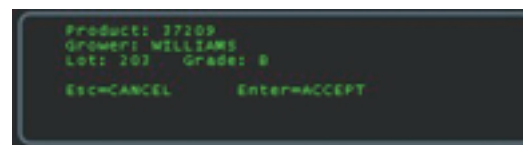
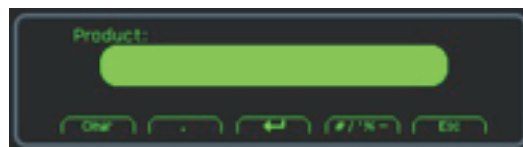
Show reports by lot, type, grade, grower/supplier, Automatically email reports. You are able to export data to spreadsheets or databases for further analysis. Select tag parameters on weight display or pushbutton panel. Eliminate manual reporting errors and delays.

Achieve non-stop operation with optional dual-redundant printers. Select tag parameters on weight display or pushbutton panel. Eliminate manual reporting errors and delays.

Achieve non-stop operation with optional dual-redundant printers. Select tag parameters on weight display or pushbutton panel. Eliminate manual reporting errors and delays. Achieve non-stop operation with optional dual-redundant printers.

Select from several standard fields: Sequence, Kill number, Lot, Time, Date, Grower/Supplier, Sex/Grade: numeric (1,2,3) or descriptive (BULL, COW), Type: Kosher or non-Kosher or Quality Grade - all optionally bar coded.

CAR-PAC



CAR-PAC Software and Hardware Specifications

Software Specifications

PC Software	Supports Windows 7 and 10
Scale Support	Avery Weigh-Tronix ZM Series
Scale User Interface	Dot graphic display, 5"W x 1.33"H, 240 x 64 dots cold cathode. Simultaneously displays 0.6" high readings of weight, Kill number, Type, Grade, etc.
Scale Operating System	Event driven functionality triggered by actions such as scanning of Kill number, pressing a function key, or pressing a grade selection button
Network Support	Windows Network ready. Data can be stored anywhere on company wide network. Data is retrieved from the scale stations TCP/IP sockets via wired Ethernet or industry standard Wi-Fi components.
Compatibility and Data Storage	CSV, Fixed Record Length, SQL Server, DB2, Oracle, Sybase, Access, dBase, Paradox, FoxPro, Excel, and other ODBC compliant databases
Security	Five level user password system. Tracks and records all user actions in system log files
Transaction Speed	Perform data entry, weighment, tag print, and data store in as little as 8 seconds. Data record is immediately available for billing system.
Barcode Specification	Code 39, Extended Code 39, Codabar, Code 128, Code 11, Code 93, EAN-13, EAN-14, UCC/EAN-128, I 2 of 5, UPC, PDF, and other standard formats
Online Help	Comprehensive online help with lookup index

Specifications are subject to change without notice
All rights reserved.
Copyright 2006-2020 TSW Automation, Inc.