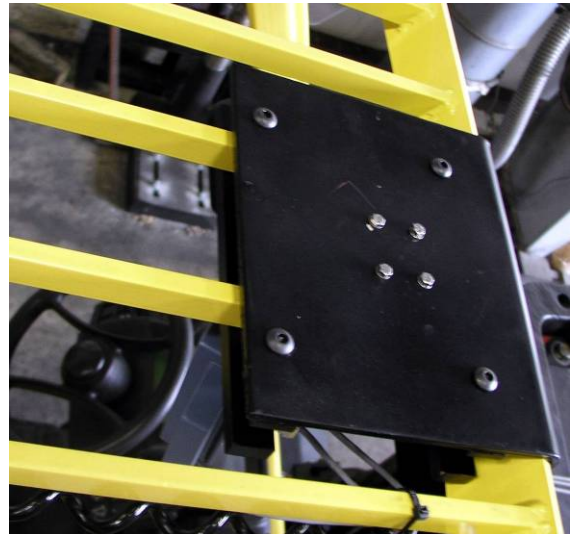


Typical t700/WI 125 Mounting Configurations Arranged by Lift Truck Type

Standard Mounting Arrangements





t700 Standard Bracket



WI-125 Mounting Bracket



WI-125 Mounting Bracket



WI-125 Bracket Top View



t700 - "XL" Bracket for Left to Right Style Cages



t700-"XL" Bracket - Top View



t700 – “XL” Bracket for Left to Right Styled Cages



t700 – “XL” Bracket Outside View



t700 – “XL” Bracket Lift Truck Drivers View



t700 – “XL” Bracket Top View



WI-125 “Z-Bar” Back Bracket Mounting Style



WI-125 “Z-Bar” Mount – Top View

Note: Two Holes are added to the Standard Weigh-Tronix 125 top mounting plate to affix it to the “Z-Bar” cross member.



t700 "Standard" Mounting Bracket – Drivers View



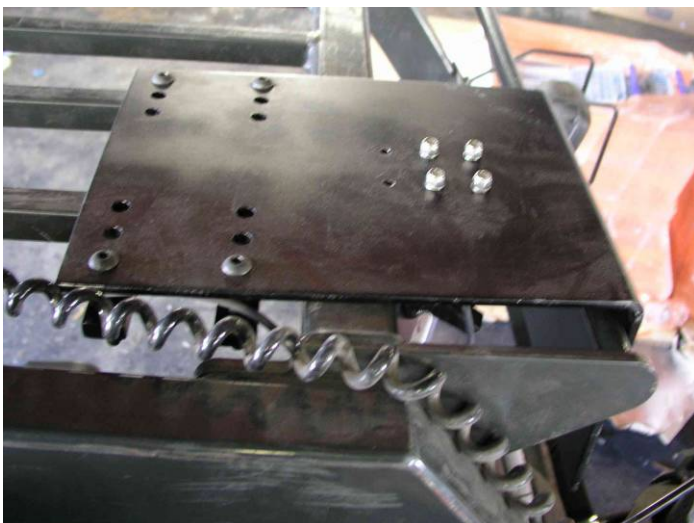
t700 "Standard" Mounting Bracket – Drivers View



t700 – "ML" (Medium Length) Mounting Bracket



t700 – "ML" (Medium Length) Mounting Bracket



t700 – "ML" (Medium Length) Bracket (Top View)



WI-125 Rear Mount Adjustable Bracket